

Portable ultrasound
made in France

Portable ultrasound
made in France



126, Boulevard de la République
16000 Angoulême • France
Tél : + 33 (0)5 45 92 03 57
Fax : + 33 (0)5 45 92 46 72
E-mail : ecm@wanadoo.fr



EXAPad

Excellence at your fingertips



www.ecmscan.com



EXAPad

A high resolution touchscreen of 15", unequalled robustness for such a quality of imaging, working time of more than two hours, exceptional lightweight and handling make of the EXAPAD a high end portable scanner capable of answering the demands of today and tomorrow veterinarians.

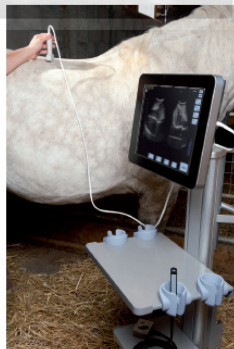
Different algorithms make the work and the diagnostics of veterinarians easier.

Patient files, reports, annotations, specific measurements, are all adapted to veterinary work.

A new way of approaching ultrasound scanning

Obviously, the new EXAPAD makes itself accessible to all.

The streamlined interface provides every user with a simple and completely intuitive use of the ultrasound scanner. The new applications, EchoTouch and EchoVoice optimize the ergonomics and make of it a handy ultrasound scanner.



EchoTouch: Thanks to the new interface system EchoTouch, only the necessary functions are present on the screen, making the work of the user faster and more efficient. The advanced settings remain of simple access as well.



EchoVoice: The embedded software, EchoVoice, gives you a voice control over the main functions of the scanner, allowing you to work with a complete autonomy, even when you are further away from the device.



EchoPad: Remote access. Thanks to the application EchoPad installed on your Ipad, you have access to a second command board for your EXAPAD, it is then possible to pilot your ultrasound scanner remotely. Your own presets, saved in your Ipad, can be used in the EXAPAD.



Technical specifications

Technical characteristics:

Screen : 15" , Touch, capacitive technology
Weight : 5,9 kg (13 lbs)
Dimensions : 39 cm x 30 cm x 7 cm
(15" x 12" x 3")
Interchangeable Battery
Autonomy > 2 hours
Fast boot up < 30 secondes
Shockproof transport case



Imaging modes:

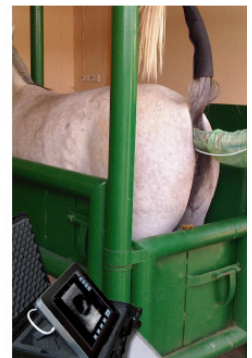
Mode B, M, B/B/M
Color Doppler CFM
Pulse wave doppler PW
Continuous wave doppler CW
Triplex

Specific functions:

Intuitive and pure user interface
Remote control access
Voice command
Needle visualisation software
Landscape or portrait mode

Storing and connectivity:

Back up of still images and clips
2 probe connectors
4 USB ports (2.0 et 3.0) / RJ45 / HDMI
Jack audio
DICOM
Wifi, Bluetooth
Kensington security



Disinfection:

With its soft design, compact, pure and spruce finish, the Exapad is very easy to clean.